

# WEDDINGS AT AUCKLAND MUSEUM

The city's most prestigious location.



Tāmaki  
Paenga Hira  
Auckland  
War Memorial  
Museum



# Congratulations on your engagement

The Auckland Museum provides a spectacular venue for any wedding. We offer exclusive hire of our memorable and unique spaces, sure to create an iconic backdrop for your special day. We would love to hear from you.

Please contact our team:  
[myevent@aucklandmuseum.com](mailto:myevent@aucklandmuseum.com)  
or 09 302 9765



# Experience the splendour of our Grand Foyer

Marvel at the magnificence of our neo-classical Grand Foyer with its dramatic columns and spectacular stained-glass ceiling soaring three floors above. An iconic space to celebrate your special evening.

## MAXIMUM CAPACITY

Ceremony	100
Seated Dinner	110
Cocktail	300

## DIMENSIONS

376 sqm

## COST

High season	Oct - Dec 2025	\$10,479*
Low season	Apr - Sep 2026	\$10,335*
High season	Jan - Mar 2026 & Oct - Dec 2026	\$10,875*
Low season	Apr - Sep 2027	\$10,975*
High season	Jan - Mar 2027 & Oct - Dec 2027	\$11,545*

\*All pricing is in New Zealand dollars, excludes GST and is valid until 31st December 2027.

## PACKAGE INCLUSIONS

- Venue hire is available six evenings a week, from 5.15pm-2am.
- A basic sound system for background music and speeches.
- Uplights are installed to highlight the beautiful Doric columns in the room and can be any colour of your choice.
- Security based on set up commencing at 5.15pm, guest arrival at 6.30pm, guest departure no later than 12am and pack out to be complete by 2am.
- Professional cleaning.
- Exclusive photo opportunities around the Museum (subject to availability).
- Dedicated Wedding and Venue Coordinator.

## ADDITIONAL ADD-ON

**Origins Gallery is also available for cocktails and finger food after your ceremony.**

- Cocktail event at the Origins Gallery
- Please ask our Wedding and Venue Coordinator for further information and pricing.
- Dimensions: 470 sqm



# Celebrate in the soaring spaces of Te Ao Mārama South Atrium

Te Ao Mārama South Atrium will take your breath away. Stand in awe as you celebrate your special day with us in this stunning architectural space under a Fijian kauri-clad tanoa.

## MAXIMUM CAPACITY

Ceremony	300
Seated Dinner	300
Cocktail	400

## DIMENSIONS

550 sqm

## COST

High season	Oct - Dec 2025	\$14,429*
Low season	Apr - Sep 2026	\$14,195*
High season	Jan - Mar 2026 & Oct - Dec 2026	\$14,915*
Low season	Apr - Sep 2027	\$15,055*
High season	Jan - Mar 2027 & Oct - Dec 2027	\$15,800*

\*All pricing is in New Zealand dollars, excludes GST and is valid until 31st December 2027.

## PACKAGE INCLUSIONS

- Venue hire is available six evenings a week, from 5.15pm-2am.
- A standard sound system for background music and speeches.
- Your colour choice of uplighting for the walls of the crescent and Under the Tanoa.
- Stage (8.4m x 2.4m) and dance floor (8m x 8m).
- Security based on set up commencing at 5.15pm, guest arrival at 6.30pm, guest departure no later than 12am and pack out to be complete by 2am.
- Professional cleaning.
- Exclusive photo opportunities around the Museum (subject to availability).
- Dedicated Wedding and Venue Coordinator.





# Enjoy breath-taking views of Auckland Under the Dome

Under the Dome is a spectacular venue, at the top of the Museum. Magnificent near 360-degree views of Auckland city will certainly add the wow factor to your day.

## MAXIMUM CAPACITY

Ceremony	400
Seated	400
Cocktail	500

## DIMENSIONS

Main event space	578 sqm
2 x Pre-function space	148 sqm

## COST

High season	Oct – Dec 2025	\$15,089*
Low season	Apr – Sep 2026	\$14,900*
High season	Jan - Mar 2026 & Oct - Dec 2026	\$15,625*
Low season	Apr - Sep 2027	\$16,150*
High season	Jan - Mar 2027 & Oct - Dec 2027	\$16,900*

\*All pricing is in New Zealand dollars, excludes GST and is valid until 31st December 2027. \*\*Chairs shown in photos are different to those included in this package.

## ADDITIONAL ADD-ON

### Fire Ceremony

This venue is suitable for holding Agni fire ceremonies, please ask our Wedding and Venue Coordinator for further information and pricing.

## PACKAGE INCLUSIONS

- Venue hire is available seven days a week, from 8am-2am.
- A basic sound system for background music and speeches.
- Lighting on the ceiling in the room that can be any colour of your choice.
- Complimentary use of our round banquet tables and upholstered chairs.\*\*
- Stage (8.4m x 2.4m) and dance floor (8m x 8m).
- Security, based on set up from 8am, guest arrival at 4pm, guest departure no later than 12am and pack out to be complete by 2am.
- Professional cleaning.
- Exclusive photo opportunities around the Museum (subject to availability).
- Dedicated Wedding and Venue Coordinator.



# Let us help with the finishing touches

## CATERING

While we cannot offer self-catering, our accredited caterers are more than happy to assist you with planning the perfect menu. They are familiar with the venues and can be relied on to make your wedding seamless and special.

Our caterers can also offer extra assistance in arranging the detail of your day – whether that's choosing the perfect table settings or designing a personalised menu to wow your guests. Beverages can be purchased via the caterer you have chosen, if you would prefer to source your beverages yourself (BYO), a charge per person will apply.

**For a quote on food, beverage, glassware, cutlery, crockery, staff and linen please contact:**

**Collective**  
FOOD & HOSPITALITY EXPERIENCES

THE  
GREAT  
CATERING  
CO.

urban  
GOURMET

**Collective**  
09 575 1575  
experiences@collective.co.nz

**The Great Catering Company**  
09 376 1424  
sales@greatcatering.co.nz

**Urban Gourmet**  
09 366 3086  
events@urbangourmet.co.nz

## AUDIO VISUAL

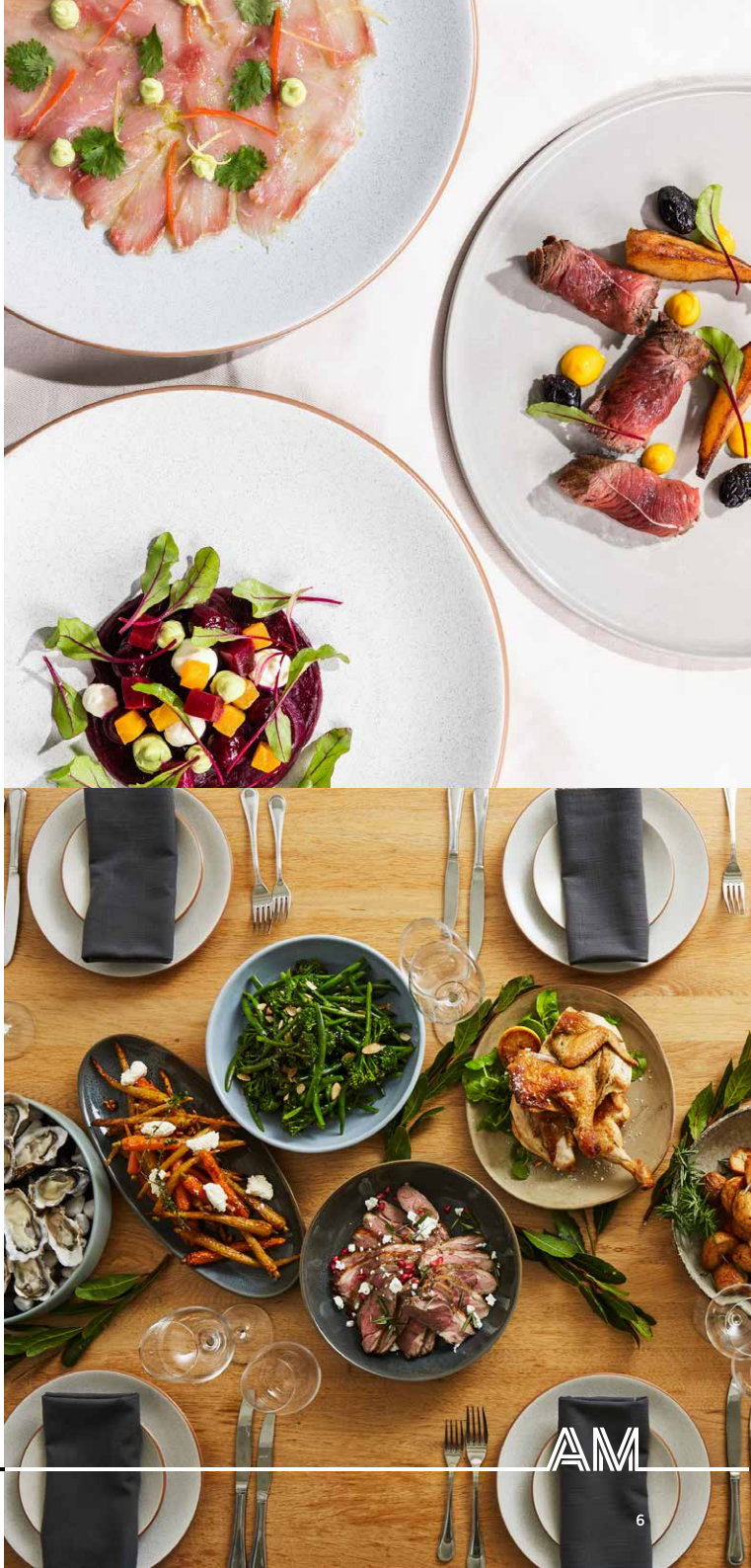
Are you looking to add sparkle to your day with more lighting or extra sound and staging? Our Wedding and Venue Coordinator will be delighted to connect you with our AV supplier, Multi-Media Systems, who can guide you through the additional audiovisual options and pricing available.



## MUSEUM STORE

After special gifts that offer a lasting memory of your special day? Talk to our Wedding and Venue Coordinator about personalised gifting options from our Museum Store's beautiful collection.

\*All pricing is in New Zealand dollars.





# The finer details...

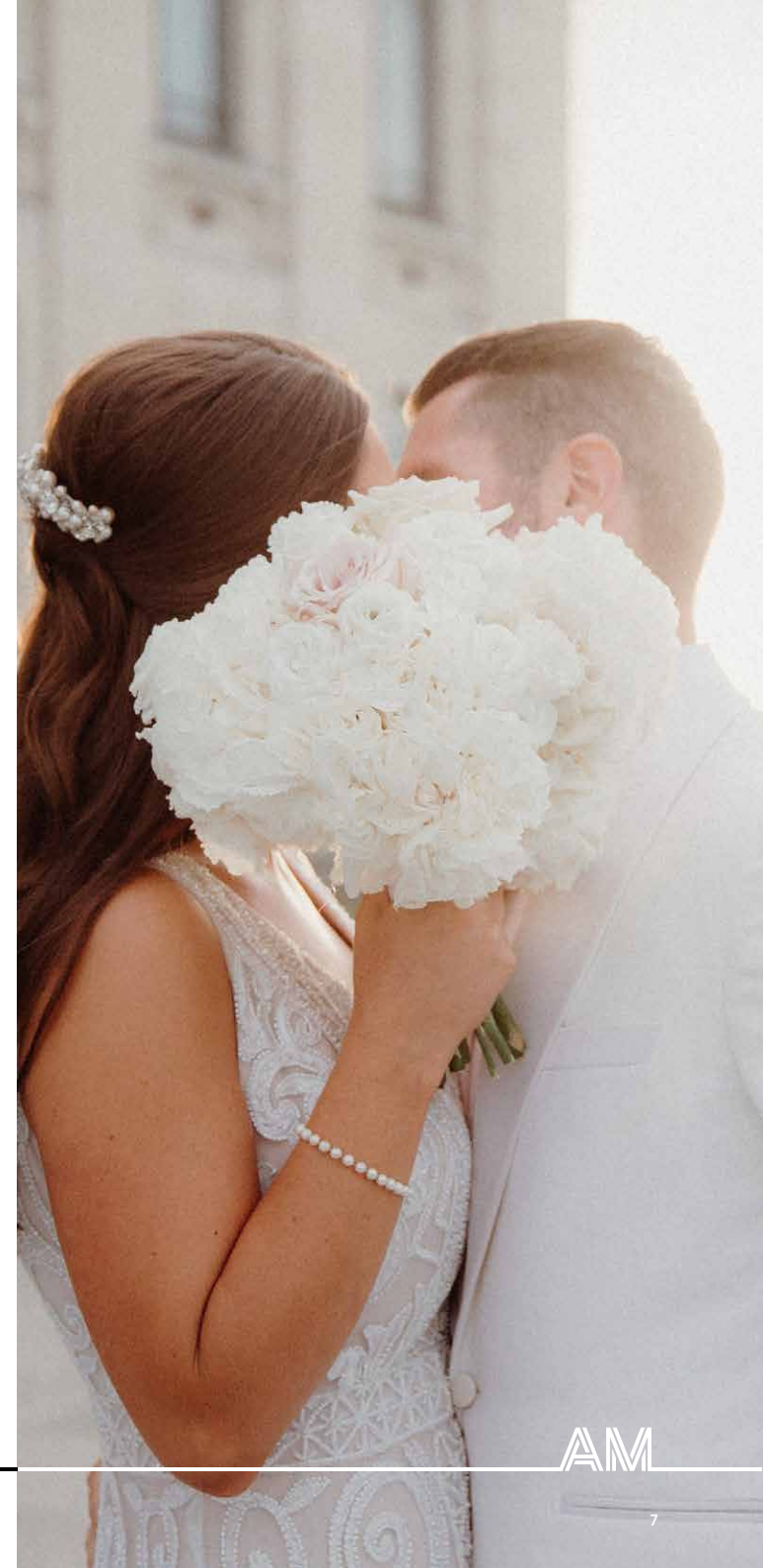
## BOOKING INFORMATION

- Please check the availability of your preferred wedding date/s with our Wedding and Venue Coordinator.
- Should you want to hold your date/s while you are looking into your options we can pencil book these for fourteen (14) business days.
- If another client is ready to confirm on the same date, you will be advised and have 72 hours to release or confirm the date.
- To confirm your booking you will need to sign a contract and make a payment of 30% of the venue hire fee first deposit by direct credit or credit card.\* A further 40% of the venue hire fee as a second deposit will be taken 90 working days prior to the event date. A further 30% of the venue hire fee as the third deposit will be taken 30 working days prior to the event date. The final cost including additional charges will be invoiced to you post event.
- If the signed contract and any of the deposits required are not paid by the due date, then we reserve the right to cancel your booking.
- Quoted pricing is subject to change from the date of your enquiry, however once contracted the pricing will remain as stated in your signed contract.
- Any additional costs, outside of the Wedding Package amount (e.g additional security and cleaning) are invoiced after your wedding and must be paid by the 20th of the following month.

## CANCELLATION POLICY

- Where the cancellation is notified no earlier than 120 working days and no later than 90 working days prior to the hire period or event: the first 30% deposit of the venue hire fee will be charged as a fee for the cancelled booking.
- Where the cancellation is notified no earlier than 90 working days and no later than 30 working days prior to the hire period or event: the first and second deposits (totalling 70% of the venue hire fee) will be charged as a fee for the cancelled booking.
- Where the cancellation is notified within 30 working days of the hire period or event: The full venue hire fee will be charged as a fee for the cancelled booking. No refund will be payable to you.
- Date amendments within 120 working days of the hire period or event: the first 30% deposit of the venue hire fee will be charged as a fee for the amended booking.
- If liable for amendments or cancellation fees, Auckland War Memorial Museum shall invoice you for the appropriate amounts less any deposits held.
- Our Wedding and Venue Coordinator will discuss our cancellation policy with you.

\*Please note a surcharge of 2.5% will be incurred on any payments made by credit card



# Your questions answered

---

We've put together some commonly asked questions to give you the information you need to help with your planning.

**Q. When are the Auckland Museum venues available for hire?**

Under the Dome venue is available for events 363 days of the year. Auckland Museum is closed for all events on ANZAC Day (25 April) and Christmas Day (25 December). Our other wedding venues are available for evening hire, except Tuesdays.

**Q. Can I self-cater?**

Unfortunately no – Auckland Museum's venues are unique and therefore require caterers who understand the environment.

You can choose from one of our three accredited caterers.

**Q. Can I smoke in the venues?**

Smoking, including vaping and e-cigarettes, is not permitted anywhere in Auckland Museum at any time, including the venues.

**Q. Where can my guests park during the event?**

Auckland Museum's car park is available for your guests at an hourly rate, or you can pre-purchase parking tickets for guests. For an evening wedding we can offer discounted parking from 5pm-12am at \$11.50\* per car. Parking is also available around the Museum. Charges may apply.

**Q. Do you provide on the day coordination?**

Your Wedding and Venue Coordinator will confirm the logistics and operational side of your wedding. You will be required to choose your preferred suppliers to be part of the wedding. Our team will then work with you and these suppliers to ensure that your vision is compliant with the venue and you have all of the information that you require.

**Q. Are there any restrictions on the types of decorations we can bring in for the event?**

Auckland Museum is committed to the care and preservation of the collections housed within the building. Please contact our Wedding and Venue Coordinator if you are considering bringing materials into the Museum such as:

- Plants in soil
- Flowers or plant material, either fresh cut or dried
- Animals or animal material, for example feathers
- Wood

Auckland Museum staff will determine if the material can be permitted into the Museum in accordance with international guidelines on preventative conservation in museums. In some cases pest treatment may be required and the cost of this will be invoiced to you. Items that we do not allow include:

- Open flame candles
- Confetti
- Helium balloons
- Smoke/haze/CO2 gas
- Dry ice and cold spark machines

**Q. Can we perform an Agni Fire Ceremony as part of our day?**

Yes this is an option if you have chosen our Under the Dome venue only. We are able to offer fire suppression options for this space for a short duration, please ask our Wedding and Venue Coordinator for further information and pricing.

**Q. Can we take our Wedding Party photos inside and outside the Museum?**

Yes, we can offer the option to have photos taken within the Museum outside of the Museum's opening hours (10am-5pm), some locations may require extra approvals from internal curators and external photos of the Museum can take place at anytime. Additional costs may apply for security and photography locations are subject to availability

**Q. Can we pack out the day after the event?**

No, the venue must be left empty with all equipment removed after guest departure from your wedding. The Museum does not have any storage for equipment pre or post event.

**Q. What time can we set up on the day?**

The Under the Dome package includes set up commencing from 8am, however this may commence earlier. Please talk to our Wedding and Venue Coordinator for the costs involved for an earlier set up time. The Grand Foyer and Te Ao Mārama South Atrium are both public spaces within the Museum therefore set up cannot commence any earlier than 5.15pm on the day.

**Q. What time does my wedding need to finish by?**

All guests need to depart the venue by 12am.

\*All pricing is in New Zealand dollars.



# THANK YOU

We look forward to welcoming you  
and your guests on your special day.



IMAGE: © KIRI MARSTERS PHOTOGRAPHY



Tāmaki  
Paenga Hira  
Auckland  
War Memorial  
Museum